



Walnut Tree Road , Heston, TW5 0LR

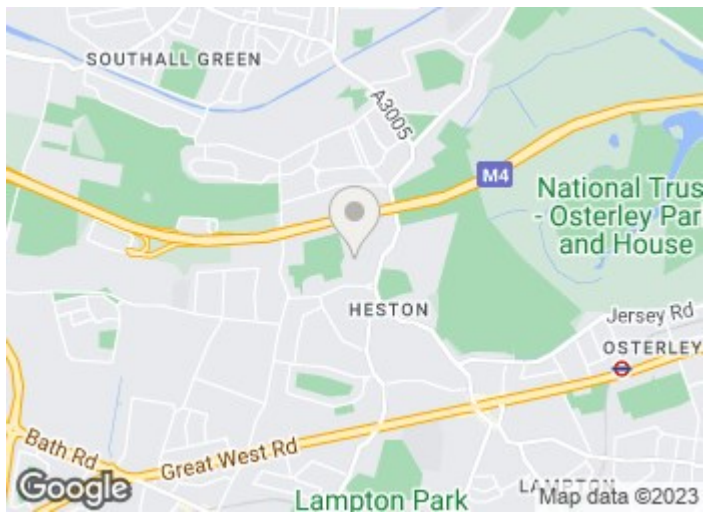
SPACIOUS & WELL PRESENTED 3 bedroom family house includes modern kitchen with dining area, 2 large reception areas, utility room, off street parking, 2 bathrooms & rear outbuilding.

POA

22 Walnut Tree Road , Heston, TW5 0LR



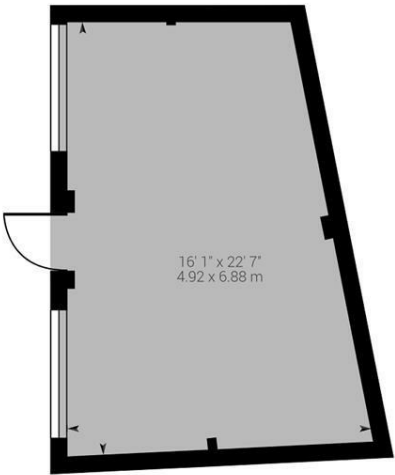
- 3 bedroom semi detached house
- 2 large reception rooms
- Utility room
- Chain free
- Off Street parking for up to 2 cars
- Modern kitchen with dining area
- Porchway
- Garden with rear outbuilding
- 2 bathrooms
- Loft conversion stpp







Floor Plan



Approximate net internal area: 312.82 ft² / 29.06 m²
While every attempt has been made to ensure accuracy, all measurements are approximate, not to scale. This floor plan is for illustrative purpose only and should be used as such by any prospective tenant or purchaser.



Powered by Giraffe360

These particulars, whilst believed to be accurate are set out as a general outline only for guidance and do not constitute any part of an offer or contract. Intending purchasers should not rely on them as statements of representation of fact, but must satisfy themselves by inspection or otherwise as to their accuracy. No person in this firms employment has the authority to make or give any representation or warranty in respect of the property.

