

Tewkesbury Road
, West Ealing, W13 0DP

MODERN & SPACIOUS 1 bedroom apartment in fantastic condition available now. The property includes open plan kitchen/reception room, good sized bathroom and bedroom with built in cupboard. Parking available & private balcony.

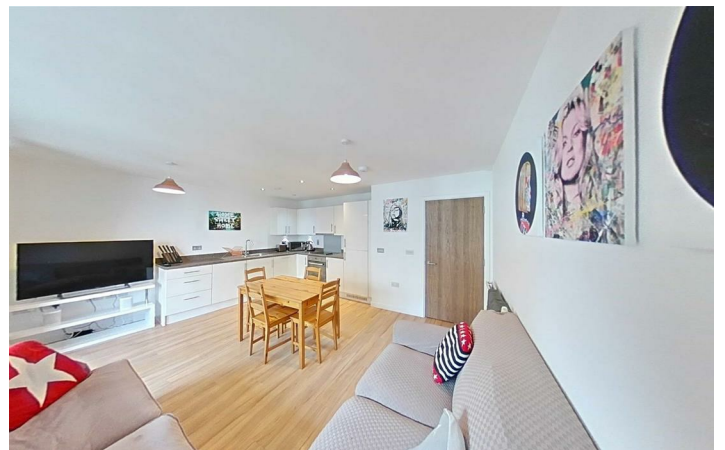
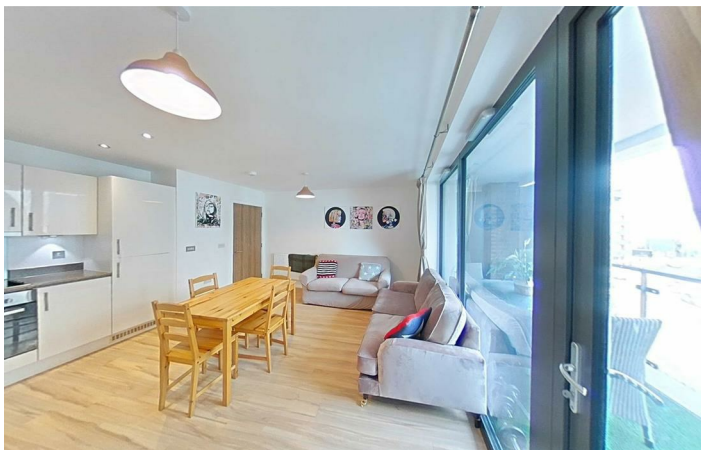
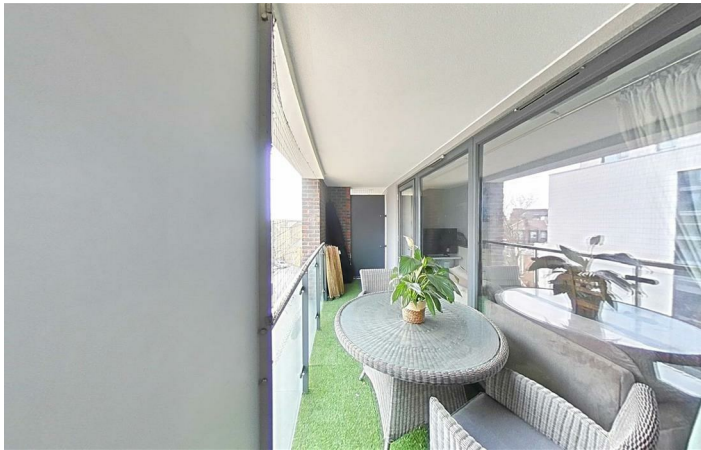
£1,400 Per Month

309 Ashmead House Tewkesbury Road , West Ealing, W13 0DP



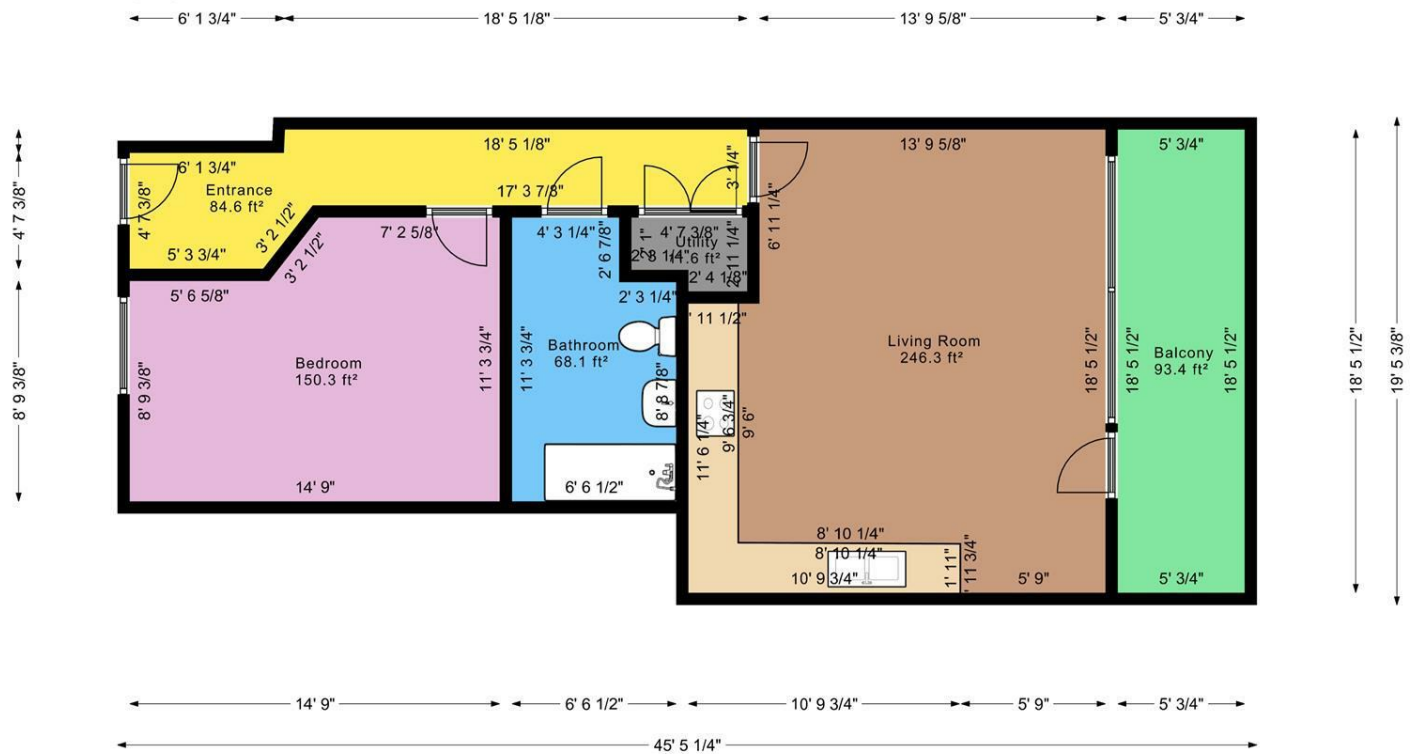
- Modern & spacious 1 bedroom apartment
- Available immediately
- Private balcony
- Good condition
- Walking distance to West Ealing station
- Open plan kitchen/reception room
- Virtual tours available
- Parking available
- Walking distance to shops on Uxbridge road
- Ideal for a single/couple





Floor Plan

Aprox Net Internal Area:
693.9 ft2
64.5 mt2



These particulars, whilst believed to be accurate are set out as a general outline only for guidance and do not constitute any part of an offer or contract. Intending purchasers should not rely on them as statements of representation of fact, but must satisfy themselves by inspection or otherwise as to their accuracy. No person in this firms employment has the authority to make or give any representation or warranty in respect of the property.

