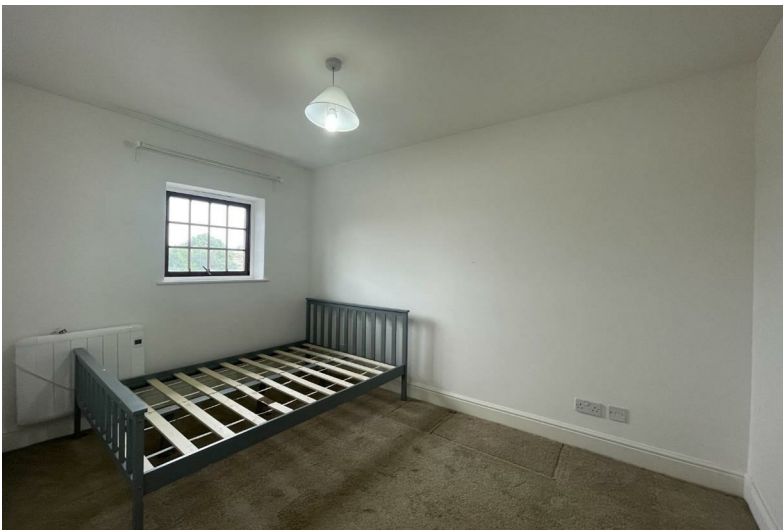




Comer Crescent  
Southall UB2  
£2,150 Per Month



# Comer Crescent Southall UB2



## Description

Spacious 3-bedroom, 2-bathroom duplex apartment featuring a walk-in wardrobe. Ideal for students and sharers. Great transport links.

Three bedroom duplex apartment  
Ideal for families, students and sharers  
Modern kitchen  
Close to local amenities  
Council Tax Band - F

Third floor  
Two bathrooms  
Double glazed throughout  
Great transport links  
EPC - D



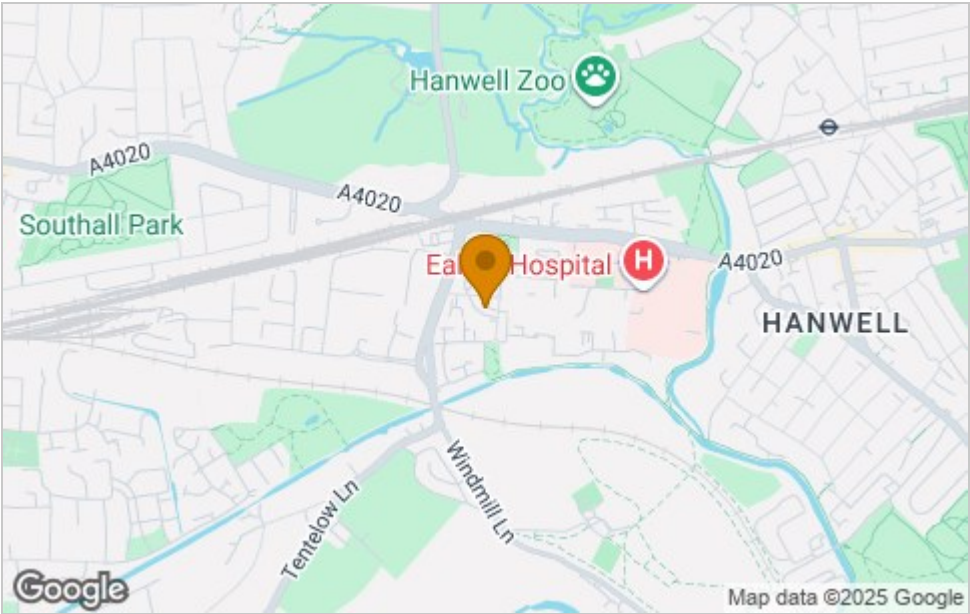




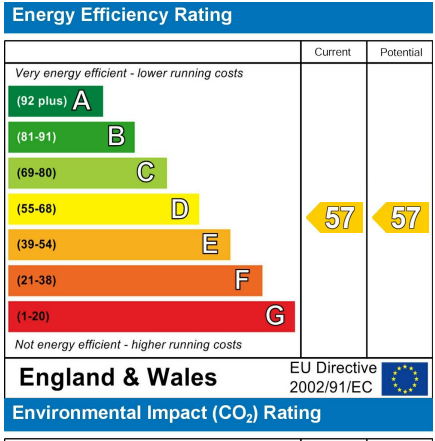
Floor Plan



Area Map



Energy Efficiency Graph



Viewing

Please contact our Castle Hill Properties - London & Berkshire Office on 020 8998 1118 if you wish to arrange a viewing appointment for this property or require further information.

These particulars, whilst believed to be accurate are set out as a general outline only for guidance and do not constitute any part of an offer or contract. Intending purchasers should not rely on them as statements of representation of fact, but must satisfy themselves by inspection or otherwise as to their accuracy. No person in this firms employment has the authority to make or give any representation or warranty in respect of the property.