

Shakespeare Road

Hanwell W7

£2,200 Per Month

Shakespeare Road Hanwell W7



Description

Discover this stylish 2-bedroom ground floor flat with a spacious garden, modern open-plan kitchen, and wood flooring throughout. Just a 6-minute walk to Hanwell station for a 15-minute ride to Central London.

Don't miss out—schedule a viewing today!

Private garden

Modern interior

Large private garden

Available

Wooden flooring

2 double bedroom ground floor apartment

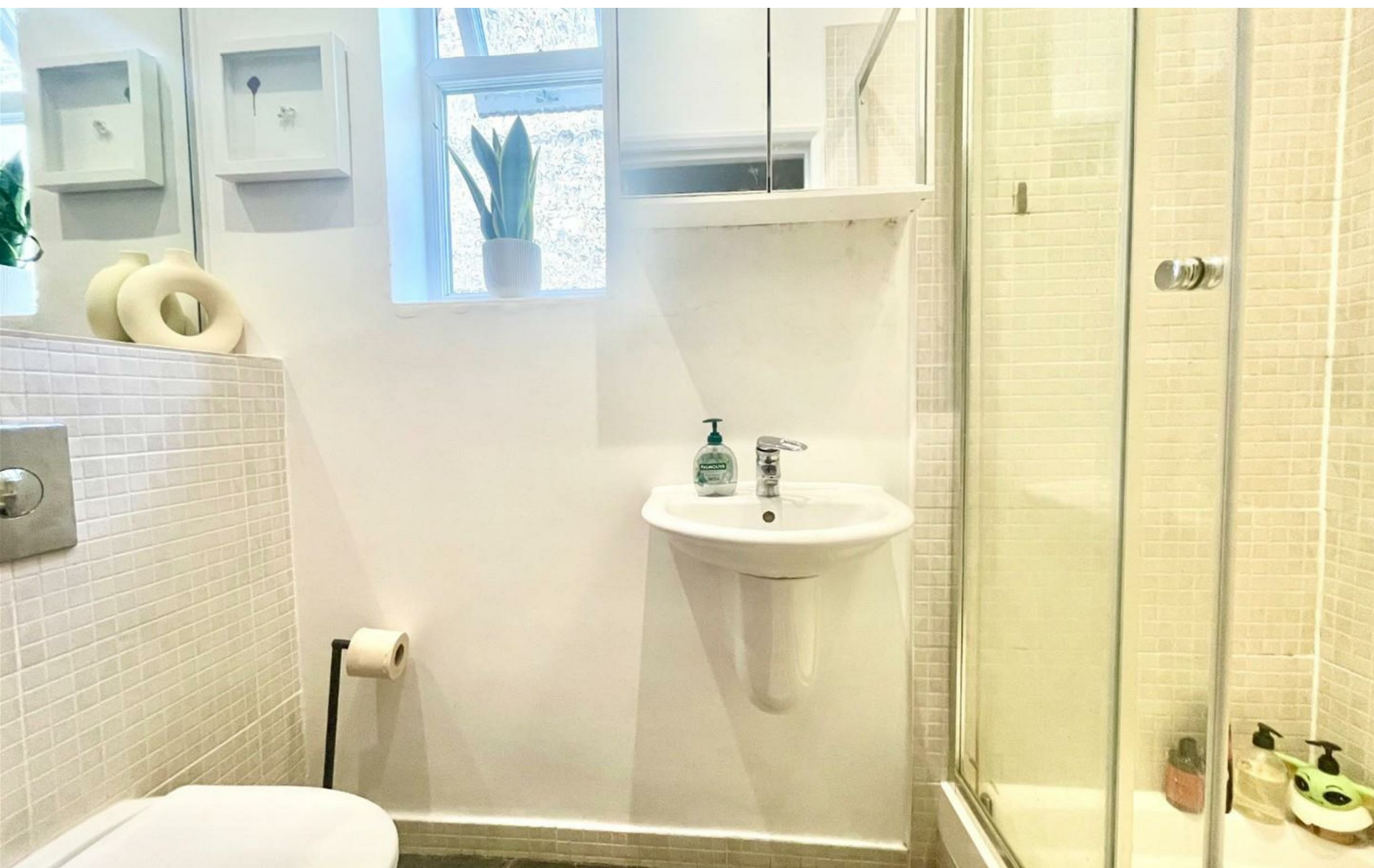
Large fully equipped modern kitchen

EPC band D

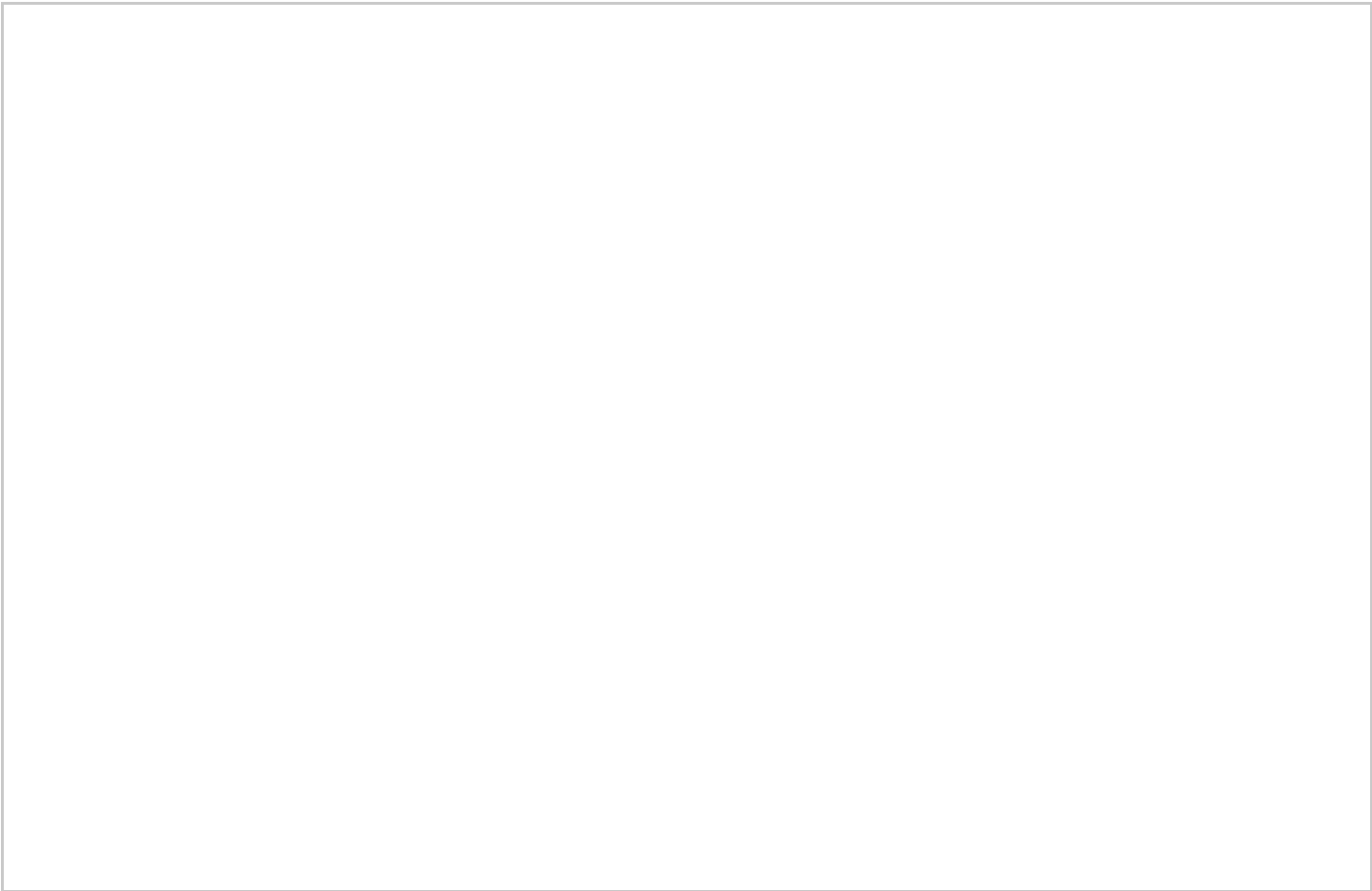
Council tax band C

Close to local shops, cafes and transportation

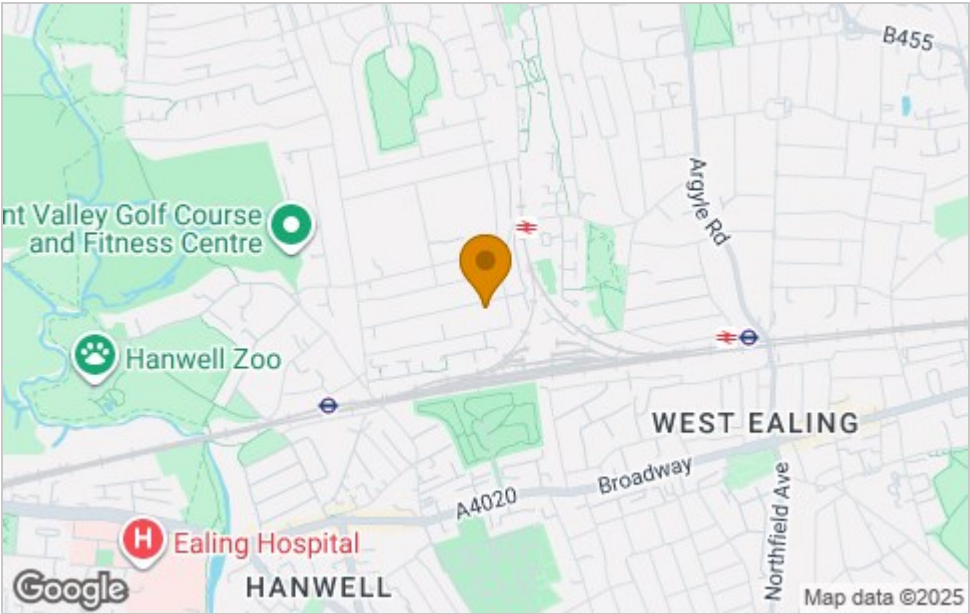




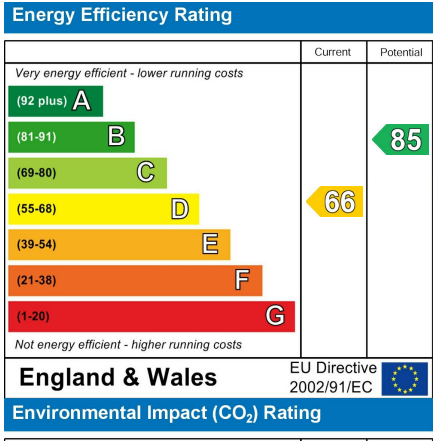
Floor Plan



Area Map



Energy Efficiency Graph



Viewing

Please contact our Castle Hill Properties - London & Berkshire Office on 020 8998 1118 if you wish to arrange a viewing appointment for this property or require further information.

These particulars, whilst believed to be accurate are set out as a general outline only for guidance and do not constitute any part of an offer or contract. Intending purchasers should not rely on them as statements of representation of fact, but must satisfy themselves by inspection or otherwise as to their accuracy. No person in this firms employment has the authority to make or give any representation or warranty in respect of the property.