



Farm Close

Maidenhead SL6

Asking Price £465,000





# Farm Close Maidenhead SL6



## Description

Conveniently located is this 2-bedroom semi-detached home featuring a spacious reception room, separate kitchen and off-street parking. Just a 2-minute walk from Sainsbury's & a short stroll to the Taplow Bishop Centre & Taplow Station only 12 minutes away.

2 double bedroom semi-detached house

Spacious reception room with direct garden access

Off-street Parking for 2 cars

Separate kitchen

12-minute walk to Taplow Station (Elizabeth Line) with 20-minute travel time to Central London

7-minute walk to Taplow Bishop Centre with restaurants & retail shops

Easy access to the A4 Bath Road for convenient travel

South facing garden

Cloakroom

Ideal for a family

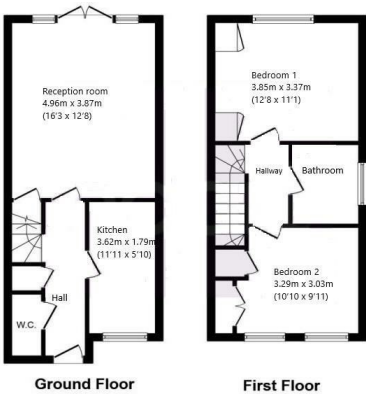






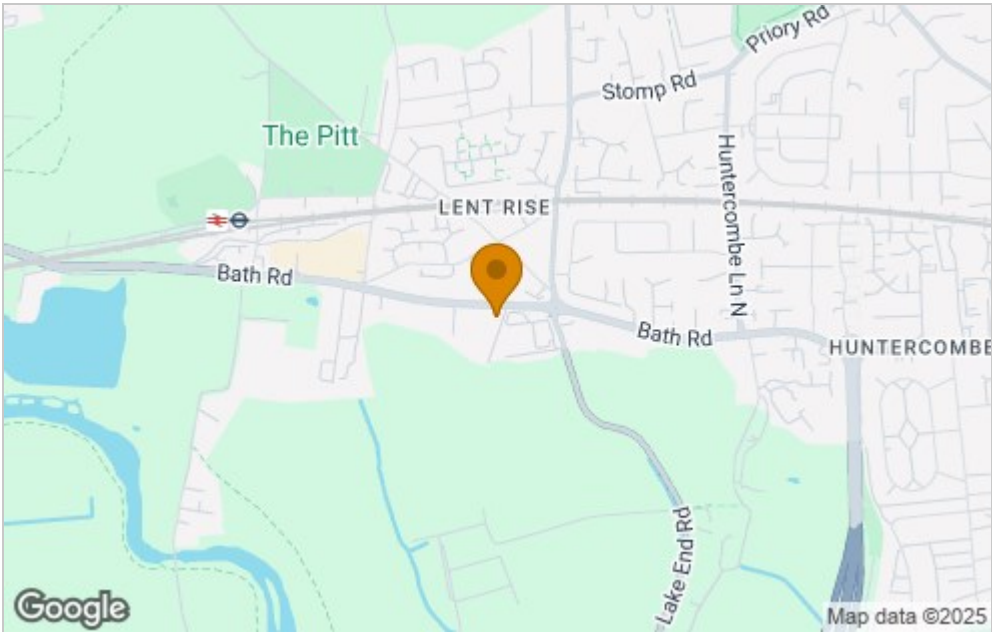


Floor Plan



Total floor area 69.0 sq. m. (743 sq. ft.) approx.  
This plan is for illustration purposes only and may not be representative of the property.  
Plan not to scale.

Area Map



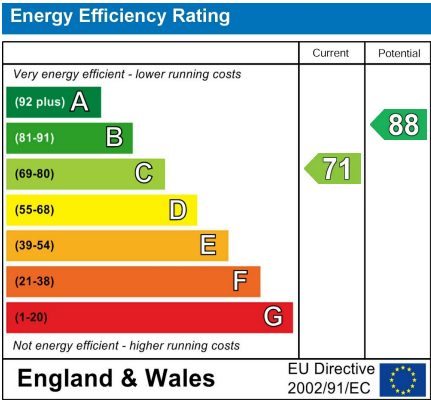
Viewing

Please contact our Burnham Office on 01753 255 755 if you wish to arrange a viewing appointment for this property or require further information.

These particulars, whilst believed to be accurate are set out as a general outline only for guidance and do not constitute any part of an offer or contract. Intending purchasers should not rely on them as statements of representation of fact, but must satisfy themselves by inspection or otherwise as to their accuracy. No person in this firms employment has the authority to make or give any representation or warranty in respect of the property.

35 High Street, Burnham, South Buckinghamshire, SL1 7JD  
Tel: 01753 255 755 Email: <https://www.castlehillproperties.co.uk>

Energy Efficiency Graph



Council Tax Band: D