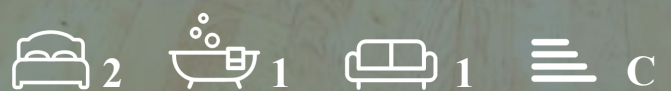
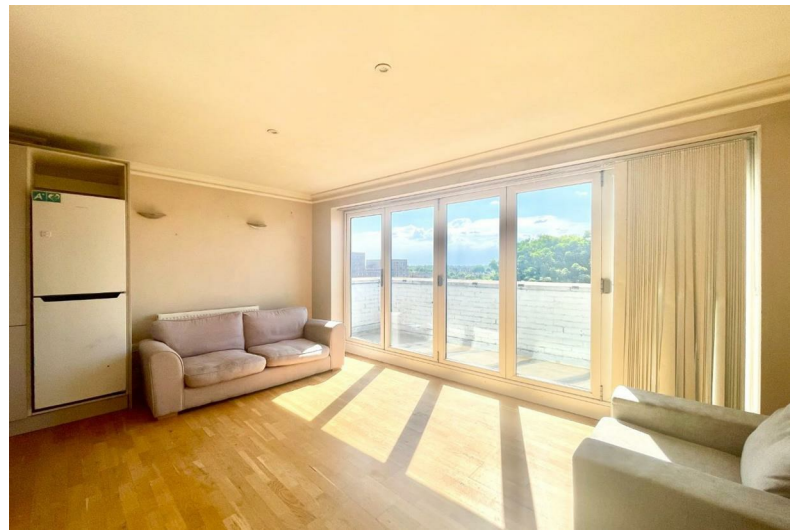




Northfield Avenue
West Ealing W13
£2,150 Per Month



Northfield Avenue West Ealing W13



Description

This stylish two-bedroom apartment in West Ealing features an open-plan reception with a modern kitchen, a private outdoor balcony, and is just minutes from the Elizabeth Line & local amenities.

2 bedroom flat
Private balcony
Built in wardrobes
Carpeted bedrooms
Council tax band D

Open plan living/kitchen
Wood flooring in living room
Top floor flat
5 minute walk from West Ealing station (Elizabeth line)
EPC band C

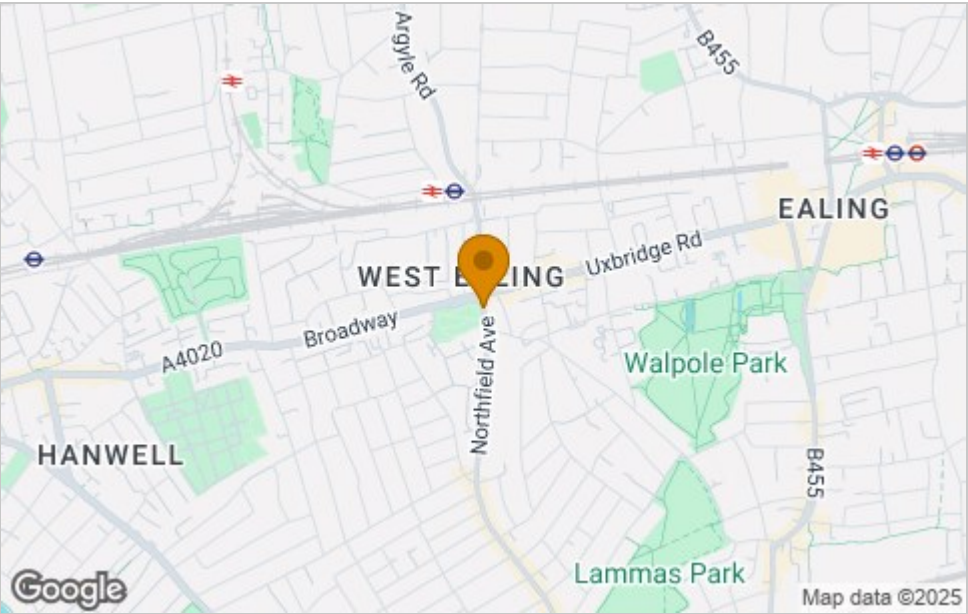




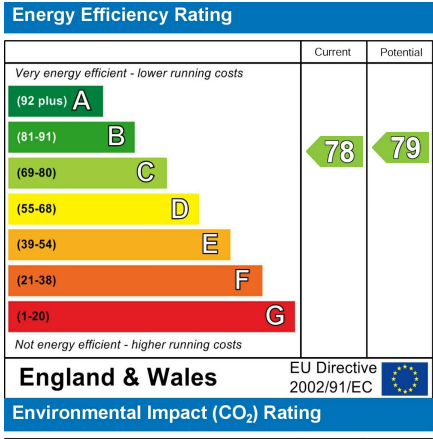
Floor Plan



Area Map



Energy Efficiency Graph



Viewing

Please contact our Castle Hill Properties - London & Berkshire Office on 020 8998 1118 if you wish to arrange a viewing appointment for this property or require further information.

These particulars, whilst believed to be accurate are set out as a general outline only for guidance and do not constitute any part of an offer or contract. Intending purchasers should not rely on them as statements of representation of fact, but must satisfy themselves by inspection or otherwise as to their accuracy. No person in this firms employment has the authority to make or give any representation or warranty in respect of the property.