

Watery Lane

High Wycombe HP10

£1,250



1



1

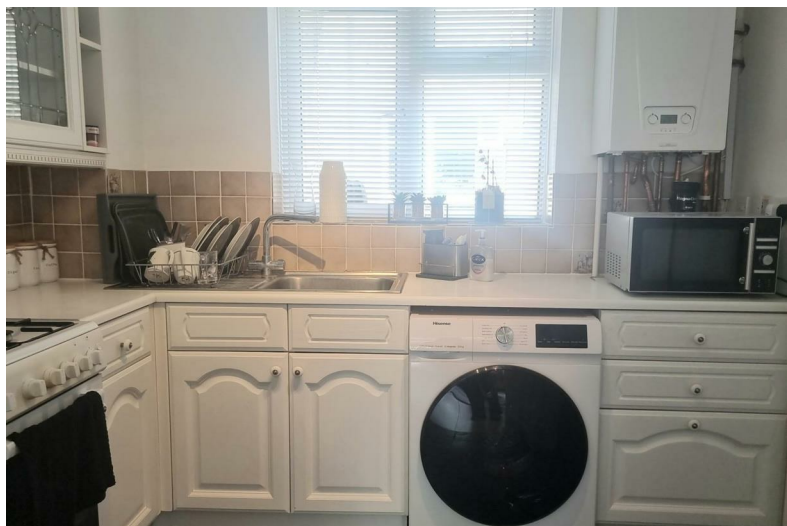


1



D

Watery Lane High Wycombe HP10



Description

A well-presented one-bedroom home in Wooburn Green offering spacious interiors, a private front garden, and allocated parking—ideal for a professional or couple seeking a quiet yet connected lifestyle.

Well-presented and neutrally decorated throughout

Fully equipped kitchen with larder cupboard

Loft space ideal for additional storage

Private front garden—usable as outdoor space

Easy access to M40 motorway (Junctions 3–4)

Spacious reception room with great natural light

Large double bedroom with built-in storage

Allocated parking included

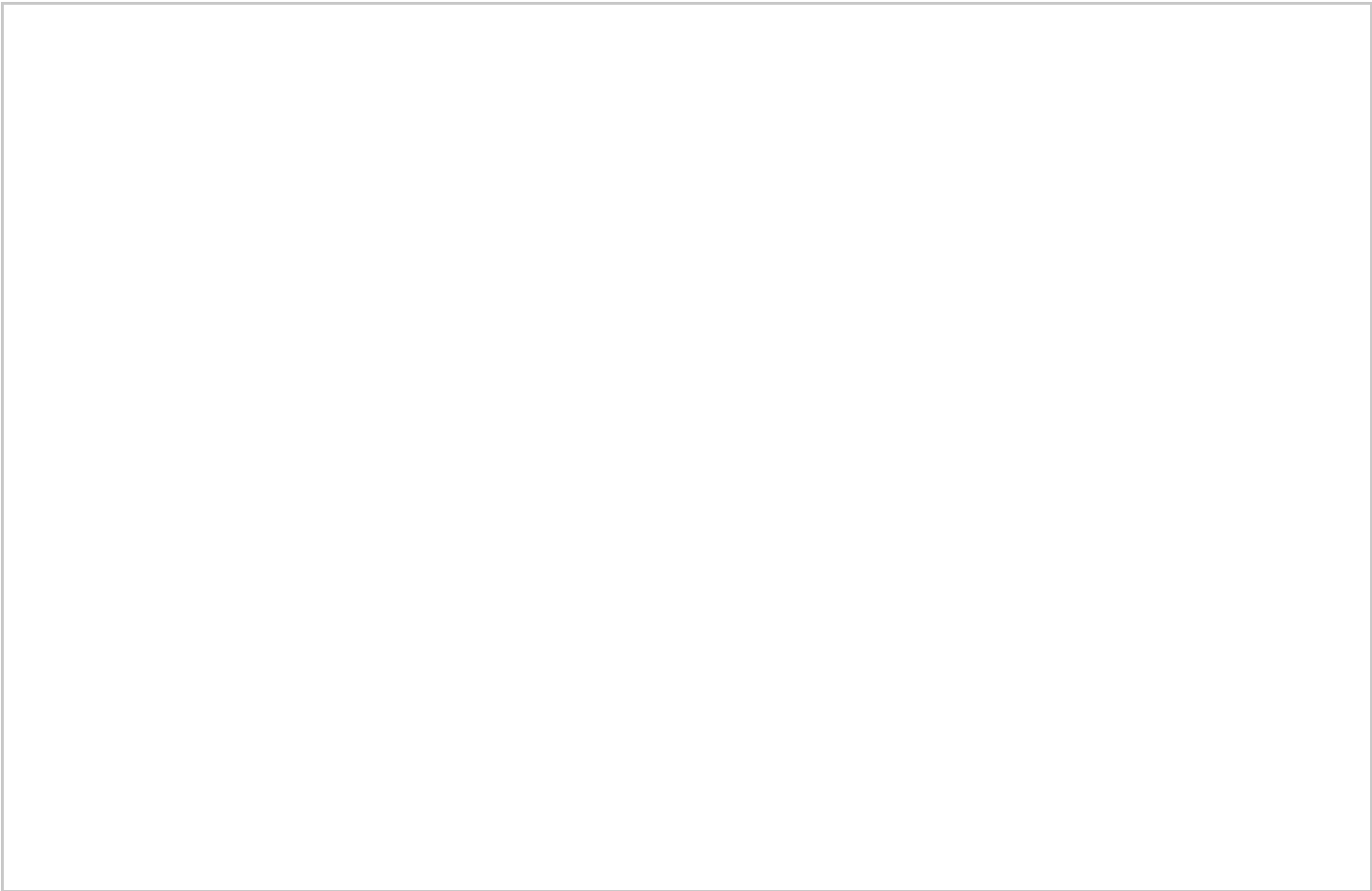
Bus routes nearby: direct links to High Wycombe, Maidenhead, Heathrow

Close to High Wycombe Coachway for airport coach services

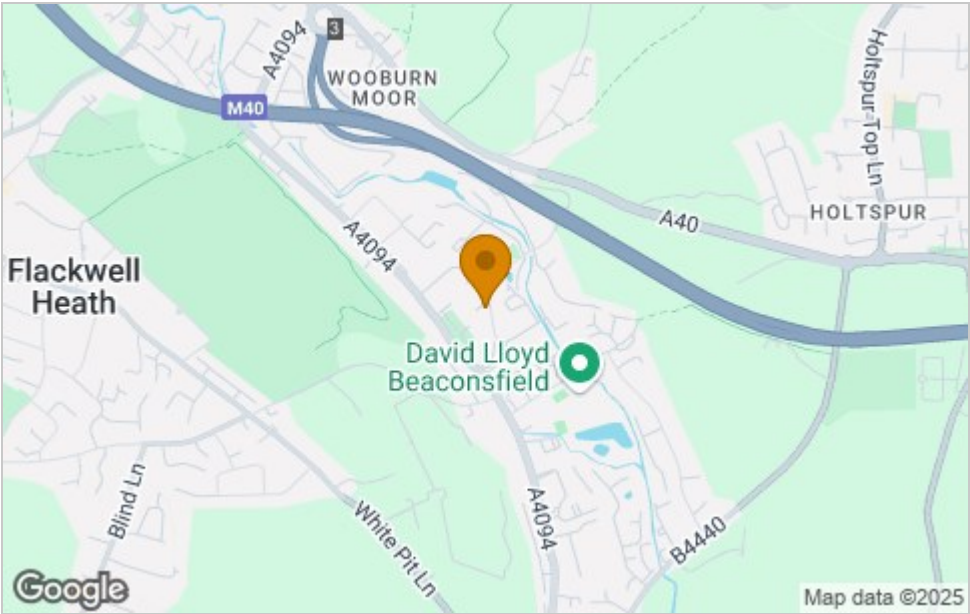




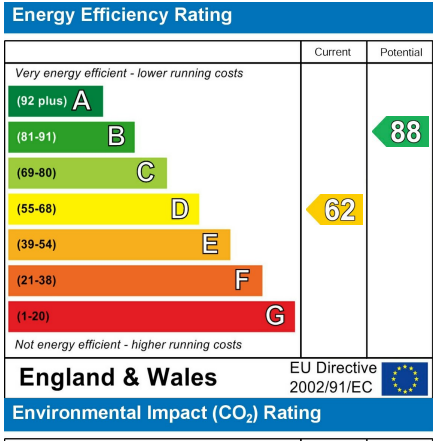
Floor Plan



Area Map



Energy Efficiency Graph



Viewing

Please contact our Castle Hill Properties - London & Berkshire Office on 020 8998 1118 if you wish to arrange a viewing appointment for this property or require further information.

These particulars, whilst believed to be accurate are set out as a general outline only for guidance and do not constitute any part of an offer or contract. Intending purchasers should not rely on them as statements of representation of fact, but must satisfy themselves by inspection or otherwise as to their accuracy. No person in this firms employment has the authority to make or give any representation or warranty in respect of the property.